

MINIATURE TOGGLES (Cont.)



Fig. 1



Fig. 2

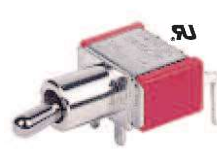


Fig. 3



Fig. 4

Miniature Toggles with Printed Circuit Board Right Angle Vertical Mount Terminals

Retail Part No.	Bulk Part No.	Figure No.	Circuit Function			Poles/Throws	125VAC/28VDC	AMPS 250VAC	Actuator Style	Actuator Material	Bushing Length	Mounting Hole	Terminal Type	Spec. Drawing Page No.
35-102	35-102-BU	1	On		On	SPDT	5	2	Bat	BCP	0.350"	0.250"	PCB††	I-7 A
35-103	35-103-BU	1	On		(On)	SPDT	5	2	Bat	BCP	0.350"	0.250"	PCB††	I-7 A
35-104	35-104-BU	1	On	Off	On	SPDT	5	2	Bat	BCP	0.350"	0.250"	PCB††	I-7 A
35-105	35-105-BU	1	On	Off	(On)	SPDT	5	2	Bat	BCP	0.350"	0.250"	PCB††	I-7 A
35-106	35-106-BU	1	(On)	Off	(On)	SPDT	5	2	Bat	BCP	0.350"	0.250"	PCB††	I-7 A
35-107	35-107-BU	2	On		On	DPDT	5	2	Bat	BCP	0.350"	0.250"	PCB††	I-7 B
35-108	35-108-BU	2	On		(On)	DPDT	5	2	Bat	BCP	0.350"	0.250"	PCB††	I-7 B
35-109	35-109-BU	2	On	Off	On	DPDT	5	2	Bat	BCP	0.350"	0.250"	PCB††	I-7 B
35-111	35-111-BU	2	On	Off	(On)	DPDT	5	2	Bat	BCP	0.350"	0.250"	PCB††	I-7 B
35-113	35-113-BU	2	(On)	Off	(On)	DPDT	5	2	Bat	BCP	0.350"	0.250"	PCB††	I-7 B

Miniature Toggles with Printed Circuit Board Right Angle Horizontal Mount Terminals

Retail Part No.	Bulk Part No.	Figure No.	Circuit Function			Poles/Throws	125VAC/28VDC	AMPS 250VAC	Actuator Style	Actuator Material	Bushing Length	Mounting Hole	Terminal Type	Spec. Drawing Page No.
35-115	35-115-BU	3	On		On	SPDT	5	2	Bat	BCP	0.350"	0.250"	PCB†††	I-7 C
35-121	35-121-BU	3	On		(On)	SPDT	5	2	Bat	BCP	0.350"	0.250"	PCB†††	I-7 C
35-122	35-122-BU	3	On	Off	On	SPDT	5	2	Bat	BCP	0.350"	0.250"	PCB†††	I-7 C
35-123	35-123-BU	3	On	Off	(On)	SPDT	5	2	Bat	BCP	0.350"	0.250"	PCB†††	I-7 C
35-125	35-125-BU	3	(On)	Off	(On)	SPDT	5	2	Bat	BCP	0.350"	0.250"	PCB†††	I-7 C
35-127	35-127-BU	4	On		On	DPDT	5	2	Bat	BCP	0.350"	0.250"	PCB†††	I-7 D
35-129	35-129-BU	4	On		(On)	DPDT	5	2	Bat	BCP	0.350"	0.250"	PCB†††	I-7 D
35-131	35-131-BU	4	On	Off	On	DPDT	5	2	Bat	BCP	0.350"	0.250"	PCB†††	I-7 D
35-133	35-133-BU	4	On	Off	(On)	DPDT	5	2	Bat	BCP	0.350"	0.250"	PCB†††	I-7 D
35-135	35-135-BU	4	(On)	Off	(On)	DPDT	5	2	Bat	BCP	0.350"	0.250"	PCB†††	I-7 D

Notes: (On) = Momentary On
BCP = Brass Chrome Plate

KN = Knurled Nut
LR = Lock Ring

LW = Lock Washer
N = Nut(s)

PCB = Printed Circuit Board
PCB† = Printed Circuit Board with Integral Bracket
QC = Quick Connect
PCB†† = Printed Circuit Board Right Angle Vertical Mount
PCB††† = Printed Circuit Board Right Angle Horizontal Mount

MEDIUM DUTY TOGGLES



Fig. 5



Fig. 6



Fig. 7



Fig. 8

Retail Part No.	Bulk Part No.	Figure No.	Circuit Function			Poles/Throws	AMPS 125VAC	AMPS 250VAC	AMPS 12VDC	HP 125-250VAC	Actuator Style	Color	Bushing Length	Mounting Hole	Terminal Type	Hardware	Spec. Drawing Page No.
35-090	35-090-BU	5	On	Off	SPST				16	Paddle*	Red	0.342"	0.500"	QC .250"	N, LN	I-7 E	
35-092	35-092-BU	5	On	Off	SPST				16	Paddle*	Green	0.342"	0.500"	QC .250"	N, LN	I-7 E	
35-094	35-094-BU	5	On	Off	SPST				16	Paddle*	Amber	0.342"	0.500"	QC .250"	N, LN	I-7 E	
35-3008	35-3008-BU	6	On	Off	SPST	15	10		3/4	Paddle	Black		0.550" x 1.125"	QC .250"	N, LN	I-7 F	
35-3091	35-3091-BU	7	On	Off	SPST	15	10		3/4	Paddle**	Amber		0.550" x 1.125"	QC .250"	N, LN	I-7 F	
35-3092	35-3092-BU	7	On	Off	SPST	15	10		3/4	Paddle**	Red		0.550" x 1.125"	QC .250"	N, LN	I-7 F	
35-3140	35-3140-BU	8	On	Off	SPST	15	10		3/4	Paddle*	Red/Green	0.379"	0.500"	QC .250"	N, LN	I-7 G	

Notes: *Lighted Paddles (12V Incandescent)
**Lighted Base (125 V Neon)

FN = Face Nut
HP = Horse Power

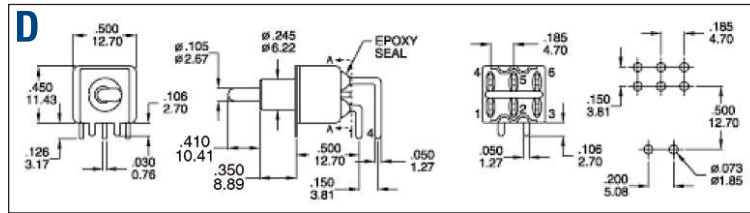
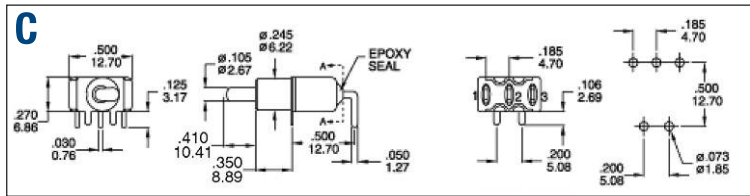
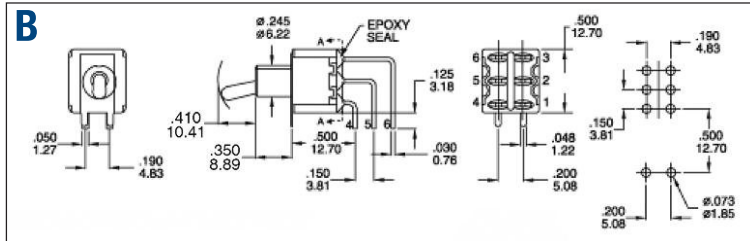
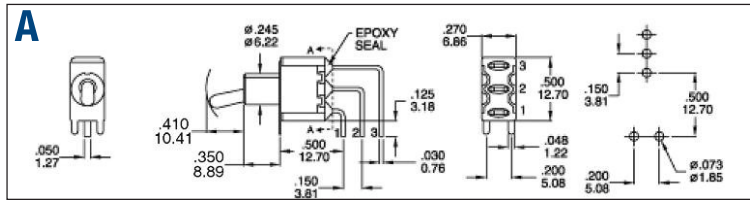
LN = Locking Nut
N = Nut

QC = Quick Connect

Note: All figures are for illustration purpose only, and the number/type of terminals may vary.

All quantities are single; BU's are packages of 25 Unless otherwise noted.

MINIATURE TOGGLES (Cont.)



MEDIUM DUTY TOGGLES

